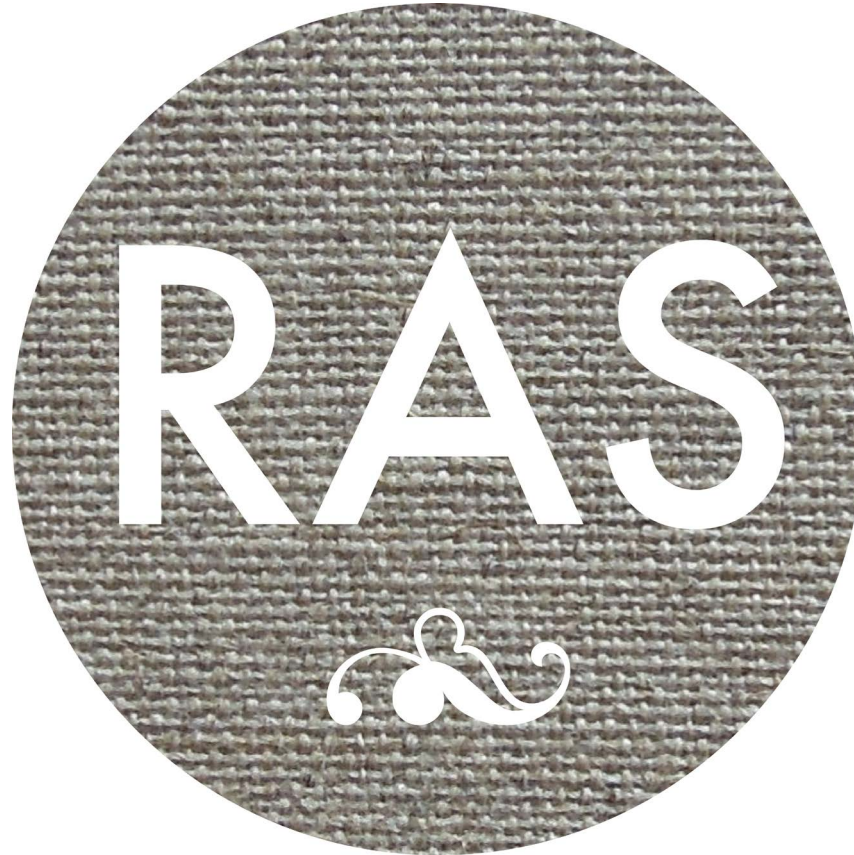


ROCKWELL ARTISAN STUDIO INC.

FINE ART PROJECT COMMISSIONS



22-19 41ST AVENUE, FLOOR 6
LONG ISLAND CITY (QUEENS) NY 11101

tel: +1 646 436 1996

studio@rockwellartisanstudio.com

www.rockwellartisanstudio.com



ROCKWELL ARTISAN STUDIO INC.

Rockwell Artisan Studio is an art studio that specializes in murals, fine art related projects and painted decoration. We offer our artistic services by commission for the realization of unique and distinctive projects. Founded in 2001, by classically trained painter Geoff Rockwell and joined in 2010 by Swiss artist Christine Zufferey (www.pluriversum.ch), Rockwell Artisan Studio collaborates with designers, architects and artists to create, develop and produce an array of projects; from stylistically diverse commissioned artwork and architectural painting to large scale murals and scenic painting; interior and set design to major art installations. In addition to fine art commissions, Rockwell Artisan Studio also offers a range of painted decoration possibilities such as; trompe l'œil, ornamental painting, restoration, patterning, painted furniture and traditional as well as innovative faux and painted finishes.

Based in the New York Metropolitan area, Rockwell Artisan Studio has realized hundreds of projects over the years, with many in major cities across the United States as well as Europe and the Middle East. Our clientele include some of today's most respected professionals in the fields of art and design.

The strength of our practice draws from a well of extensive experience and an expansive knowledge of varied artistic and artisanal traditions and techniques. With a discerning eye and refined aesthetic, skill and talent, we deeply involve ourselves in each of our projects, thoroughly researching all relevant sources, exploring traditional applications and developing fresh approaches to fulfill the desires and surpass the expectations of our patrons.

CLIENTS:

ARCHITECTS;

Davis Brody Bond, Cooper Robertson, Evan Galen Architects, Michael A. Geyer, Robert Heineman, Leah Krieger, Richard Lewis Architecture, Daniel Romualdez, Stephen Miller Siegel Architects , Tod Williams Billie Tsien Architects.

ARTISTS;

Adam Cvijanovic, Arthur Fowler, Maureen Fullam, Jeanine Gerding, Brian Goggin, Robert Gober, Dominique Gonzalez-Foerster, Simon Leung, Ian Mackinnon, Ann McGuire, Ed Ruscha, Lincoln Tobier, Christine Zufferey.

COMMERCIAL;

Aegis Holding, Bellwether Galleries, Bergdorf Goodman, Bliss Spas, Brickman, Curious Pictures, Douglas Elliman, The Food Group, Henri Bendel Store, J9 Designs, Klisanin Designs, Love Collective, The Ltd. Brand, Touchstone Pictures, Wainlands Lighting, Zabar's.

CONTRACTORS;

Drury and Lane, Caddell, Cadz u.s., IGrace, Interior Management, Manhattan Painting and Decorating, Miller and Raven, Rinehardt Miller, Evergreene Architectural Arts.

INSTITUTIONS;

Brooklyn Arts Council, DIA Center for the Arts, Gagosian, Glenstone, MoMA, Queens Public Library, San Francisco Museum of Modern Art, Schaulager Museum, Suffield Academy, The United States Department of State.

INTERIOR DESIGNERS;

Aman and Carson, Andrew Baseman Design, Beehive Studio, Christy Gordon, DD Allen Design, Dyfari Interiors, Albert Hadley, Jarret Hedborg, Ingrao, JRS Interior Design, Stehen Kreutzer, Susan Lovell Interior Design, Macmillan, Markham Roberts, McIver Morgan, Josh Mason, Ned Marshall, Christina Murphy Interiors, Fran Murphy, Pastiche, Osman Designs, Studio MRS, Studio Sofield, Harry Schnaper.

Please enjoy the following selections from our portfolio.

Geoff Rockwell
President/Director
Rockwell Artisan Studio Inc.



Ceiling mural for Ed Ruscha, US Embassy, Mexico City

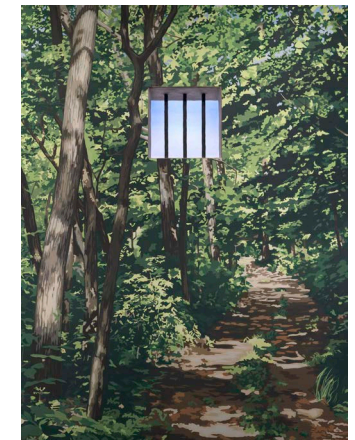
It was an honor and a privilege for us to paint legendary American artist Ed Ruscha's "Extremes and In-betweens in Two Languages (Extremos e Intermedios en dos Lenguajes) (2024)" as the ceiling mural for the entrance of the new US Embassy in Mexico City. The mural measures approximately 25' x 75', is 25' off the ground and has been painted on location using silicate mineral finishes. The project was contracted by the US Department of State and done in collaboration with Ed Ruscha's studio and Gagosian. When it opens, the Embassy (designed by Tod Williams Billie Tsien Architects and Davis Brody Bond Architects) will be the largest US Embassy in the world.



ROBERT GOBER, Untitled Installation (Glenstone Museum, Potomac MD)

In 1992, internationally renowned contemporary artist Robert Gober commissioned Geoff Rockwell and Jeff Quinn to paint the forest scenery for his groundbreaking installation at the DIA Center for the Arts in New York City. They developed the process, style and technique for the scenic painting of this important artwork and have been responsible for the realization and complete repainting of this 3000 square foot mural each time this work has been exhibited. In addition to DIA, this work has been shown at the San Francisco Museum of Modern Art, Schaulager in Basel Switzerland, MoMA and now can be seen in its permanent home, at the newly expanded Glenstone Museum in Potomac Maryland.

Photos: Ron Amstutz, courtesy of Glenstone Museum





Brewster Hall Lobby Mural

Suffield Academy, a private school in Connecticut, commissioned the design and painting of this mural for the main lobby of its landmarked central campus building, Brewster Hall. The 11' x 24' mural depicts the entirety of Suffield Academy's campus from wandering aerial perspectives and shows the evolution of the school over a half century. The design synthesizes a range of historic styles from early Renaissance to American Regionalist painting. Over 70 buildings on the school's campus are depicted in full accurate detail and it is populated with over 200 people engaging in various activities on a normal school day.

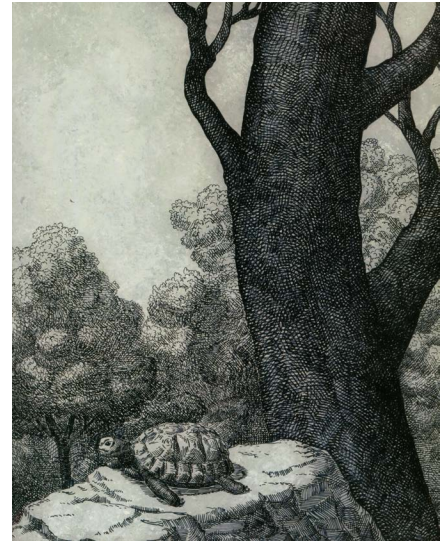
Photos: Hillary Cahn / Rockwell Artisan Studio Inc.





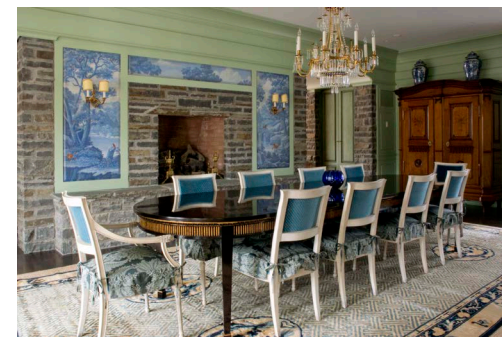
Eglomisé Glass Panels

For this private residence in the famous St. Regis Hotel in Manhattan, Rockwell Artisan Studio was commissioned to create artwork for the wall panels of the Living and Dining Rooms. In coordination with the artwork of notable contemporary artists like Kara Walker and in collaboration with the mirror and glass artist Maureen Fullam, a series of églomisé, or reverse painted glass, panels were created. The imagery is of trees in autumn and is derived from, and rendered in the style of 18th century engravings with an atmospheric painted sky as a background.



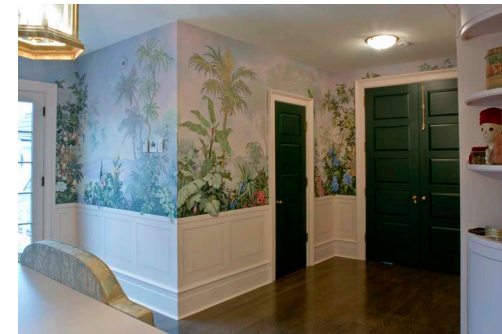
Eglomisé Glass Panels

For this private residence in the famous St. Regis Hotel in Manhattan, Rockwell Artisan Studio was commissioned to create artwork for the wall panels of the Living and Dining Rooms. In coordination with the artwork of notable contemporary artists like Kara Walker and in collaboration with the mirror and glass artist Maureen Fullam, a series of églomisé, or reverse painted glass, panels were created. The imagery is of trees in autumn and is derived from, and rendered in the style of 18th century engravings with an atmospheric painted sky as a background.



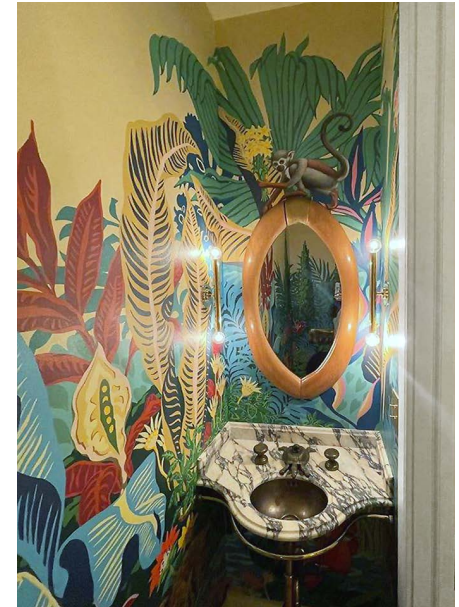
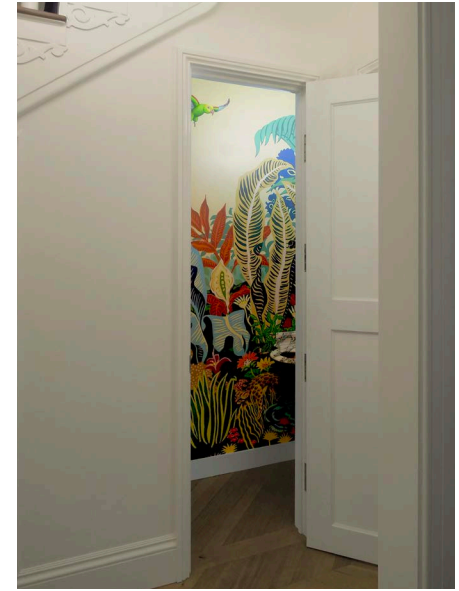
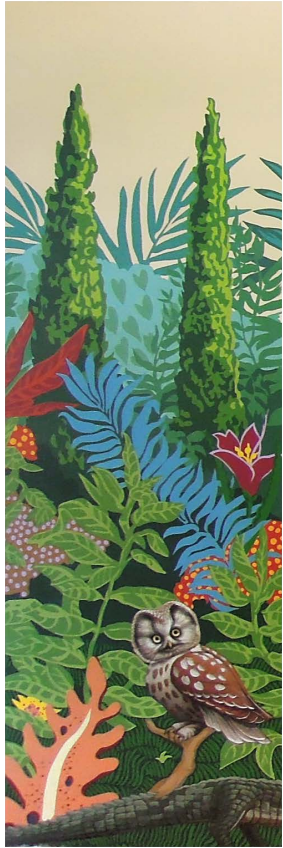
Dining Room Mural

This series of landscape panels, painted for a formal Dining Room, was inspired by decorative artwork found in the Chesa Planta mansion in the Swiss Alp canton of Engadin. The landscapes are rendered in shades of blue, evoking Faïence ceramics and Delft tile, that harmonize with the room's fabrics and furnishings. The panels include scenes depicting the property and buildings of the patron's vacation home at the foot of Mt. Shasta in northern California. As a fanciful touch, the panels are populated with animals, such as deer, woodland creatures and parrots, painted in full naturalistic color.



Dressing Room Mural

The scenery for this mural, which decorates the walls of the Mistress' Dressing Room in a mansion near Albany, was adapted from and painted in a style affecting the look of 19th century panoramic scenic wallpapers, notably Zuber's historic "Isola Bella". The composition was designed specifically for this room with elements arranged and palette chosen to suit the room's architecture. Whimsical details such as rare tropical birds, an owl and portraits of the patron's pets were included amidst the flowers and foliage. A trompe l'oeil dado was painted below the scene, enhancing the overall illusion and connecting it with the room's cabinetry.



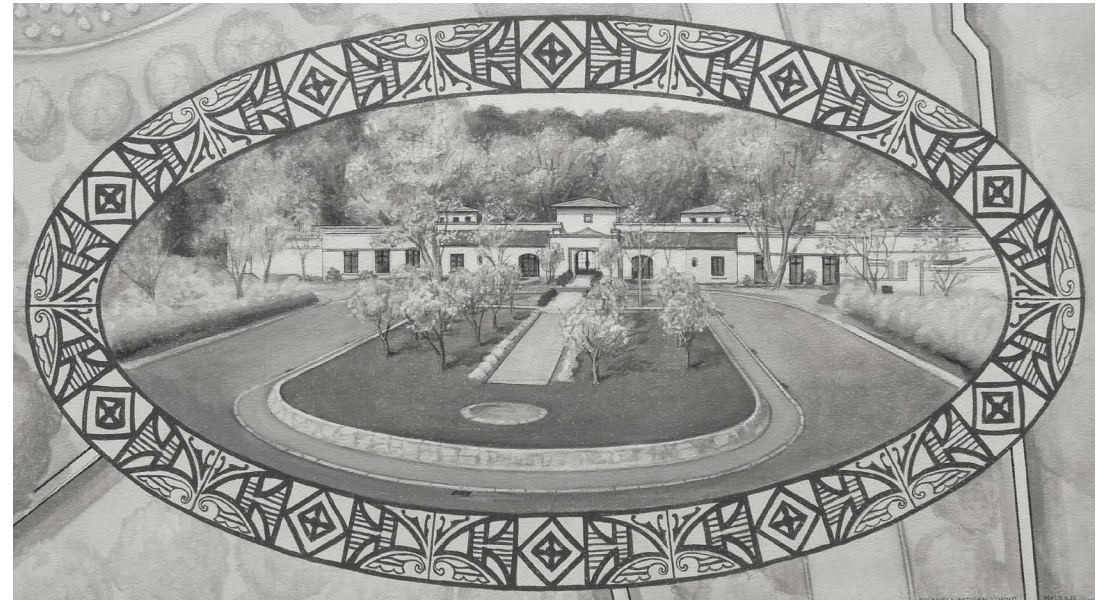
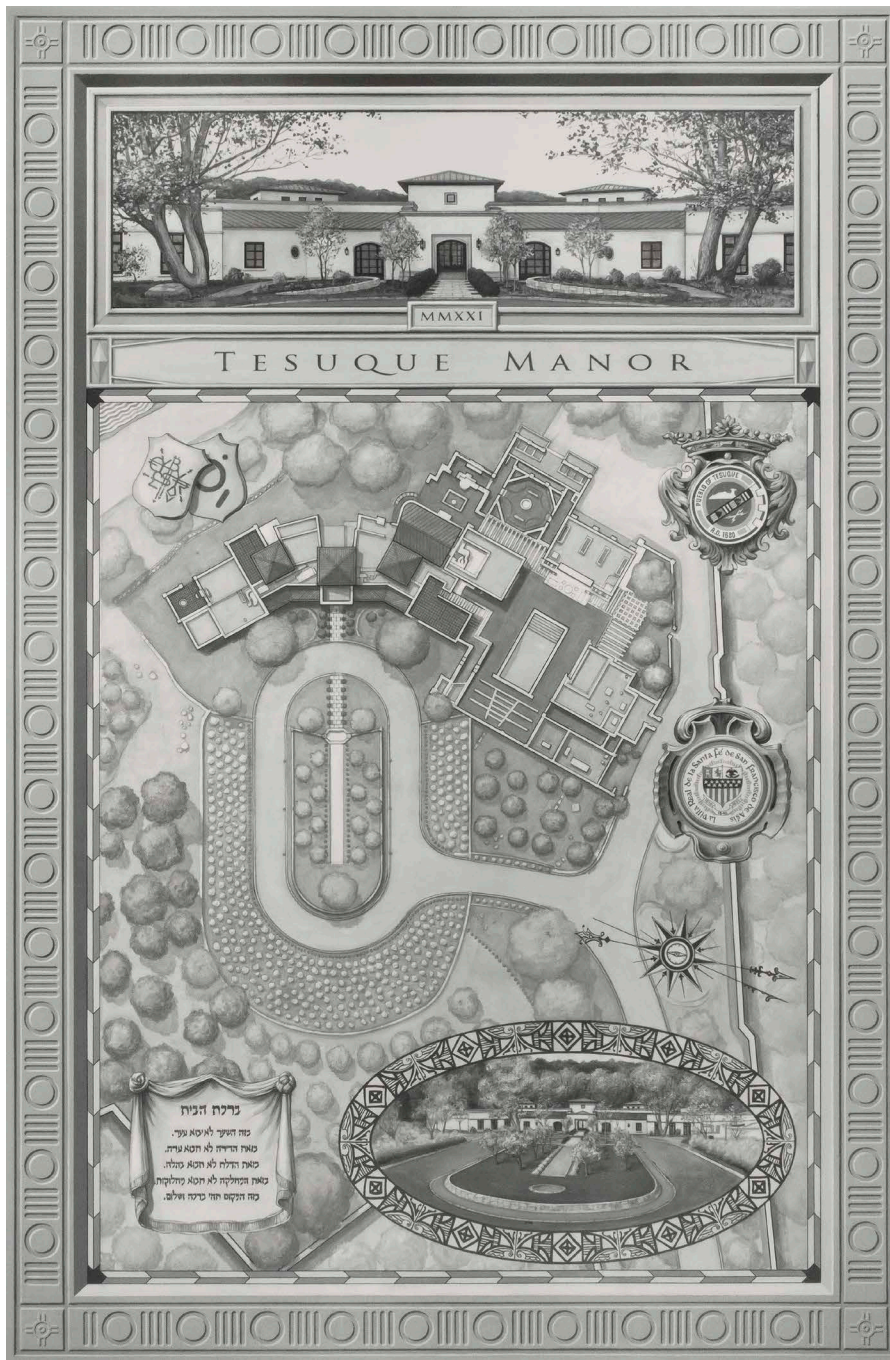
Townhouse Powder Room Mural

This wrap-a-round mural transforms a tiny Greenwich Village townhouse powder room into a secret Art Deco jungle under the stairs. Brightly colored stylized flora populated with fanciful creatures surprise with a vibrant burst of surrealist whimsy.



Dining Room Butterfly Mural

Hand painted wall paper brings a bloom of pink to this dining room in Hudson NY. Over 200 detailed butterflies of varied species (and other insects!) flit about flowering coral rose vines that intertwine through a trompe l'oeil natural bamboo trellis painted over a saturated strié.



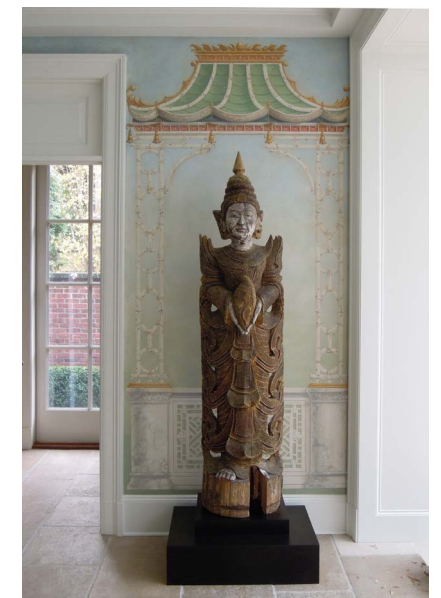
Hand Painted Floor Cloth

A hand painted floor cloth designed to evoke 18th and 19th century neo-classic architectural presentation engravings. This floor cloth depicts an aerial view of the client's house and property as a period style architectural plan and incorporates two vignетted house portraits as well as several personalized or regional motifs and symbols.



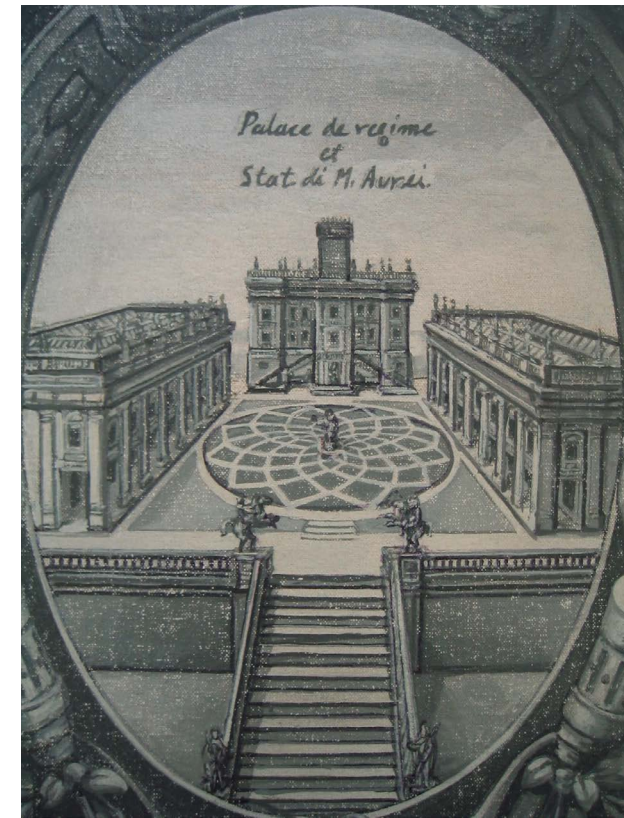
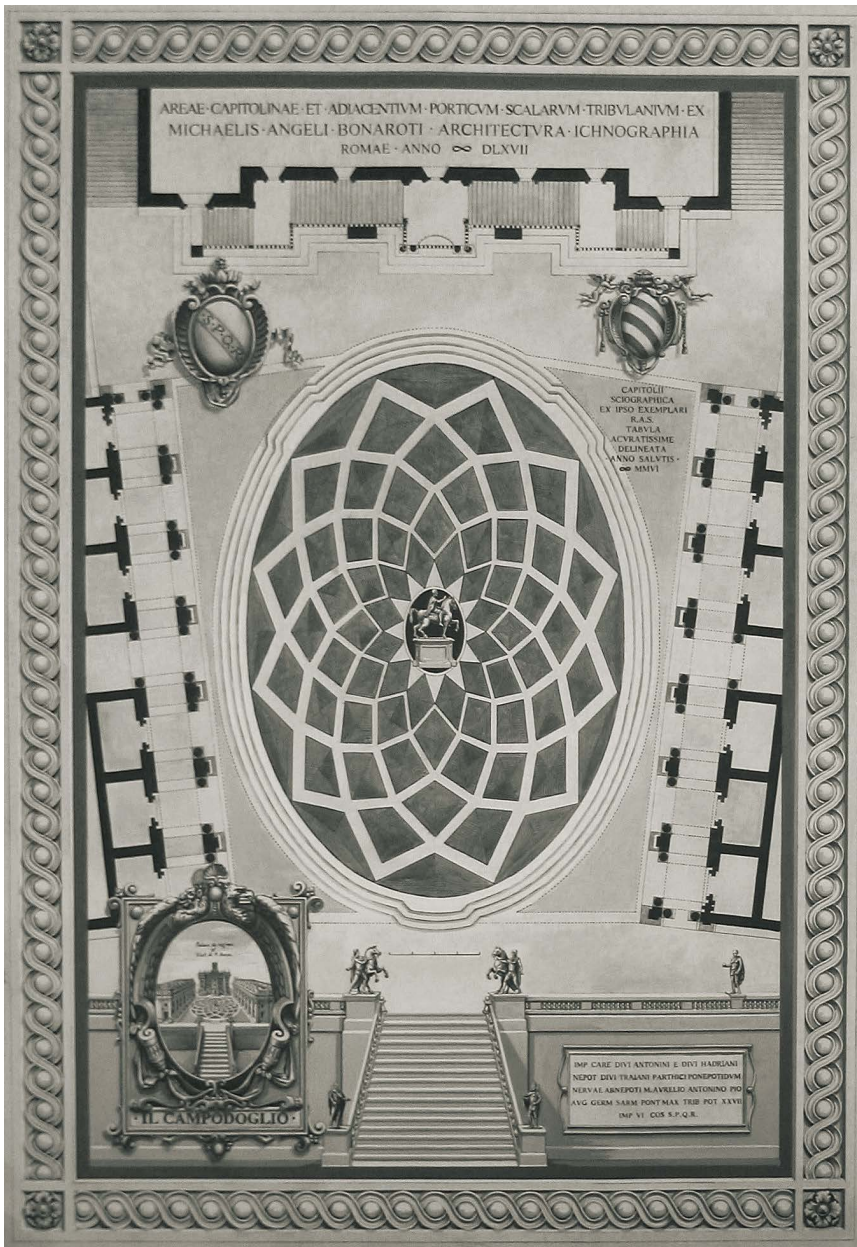
Mud Room Bird Dioramas

A series of landscapes were painted as diorama backgrounds for a collection of taxidermied game birds displayed in the Mudroom of this home in the Hamptons. The concept was inspired by nature dioramas found in natural history museums and the landscapes reference the water color illustrations of John James Audubon. The settings were researched to place the birds in their appropriate habitats.



Orangerie Concert Room Pagodas

Murals of decorative pagodas were painted for this Orangerie Concert Room in Greenwich, showcasing the patron's collection of chinoiserie and Asian art and bringing in a touch of Gilbert and Sullivan's "The Mikado". The pagodas' latticework was painted as "fantasy bamboo" and the base columns as faux marble. The ceiling was glazed a pale blue with a sky painted for the chandelier cove.



Roman Bath

Inspired by the classical art housed in the nearby Metropolitan Museum, the concept of a Roman Bath was developed for the Master Bath areas of a private residence on Manhattan's upper east side. Imagery and designs for the plaster wall painting were adapted from fresco panels found in the Roman ruins of Boscotrecase Italy, the mosaics were inspired by Pompeian pools and the floor cloth design was based on Michelangelo's architectural plans for the Capitolini in Rome.



Roman Bath

Inspired by the classical art housed in the nearby Metropolitan Museum, the concept of a Roman Bath was developed for the Master Bath areas of a private residence on Manhattan's upper east side. Imagery and designs for the plaster wall painting were adapted from fresco panels found in the Roman ruins of Boscotrecase Italy, the mosaics were inspired by Pompeian pools and the floor cloth design was based on Michelangelo's architectural plans for the Capitolini in Rome.



Safe Room Door

A concept of using a large painting to conceal a “Saferoom” door was developed and realized for this private residence in New York. The wooden frame is attached directly to the wall while the painting, mounted on a panel, hangs on piano hinges and swings outward on the push of a button to reveal the room’s entrance. The painting was composed and painted faithful to the style of George Braque’s cubist period and compliments the patron’s impressive art collection.



Living Room Ceiling Trompe L'œil

Trompe l'œil decoration was designed and painted for the inset panels of the coffered ceiling in this Grand Living Room. The blue tones of the trompe l'œil along with the gilt star motif open up the ceiling, evoking sky while maintaining a harmony with the straightforward geometry of the coffered ceiling's carpentry.



Garden Dining Room

The Small Dining Room of a mansion overlooking Long Island's Oyster Bay was transformed into a garden fantasy with an atmospheric wall and ceiling mural depiction of an elaborately trellised, tented patio amidst the bloom of indigenous flora. The concept and architectural designs for this project were derived from sources ranging from Roman frescos, Japanese gardens, France's Louis XVII, and Modern Italian muralist Renzo Mongiardino. Local plant life was researched, a scale model built and a technique for painting and antiquing that emulates aged fresco was developed especially for this project.



Children's Playroom Murals

A series of murals were designed and painted for this children's playroom in a private residence in Manhattan. The murals create a panoramic scene around the room of envisioned views from the patron's other homes in Paris, Santa Barbara, East Hampton and include cameo portraits of family members. The mural's style was influenced by children's book illustration and French scenic wallpaper and specific references were used to accurately depict the various locations.



Children's Playroom Murals

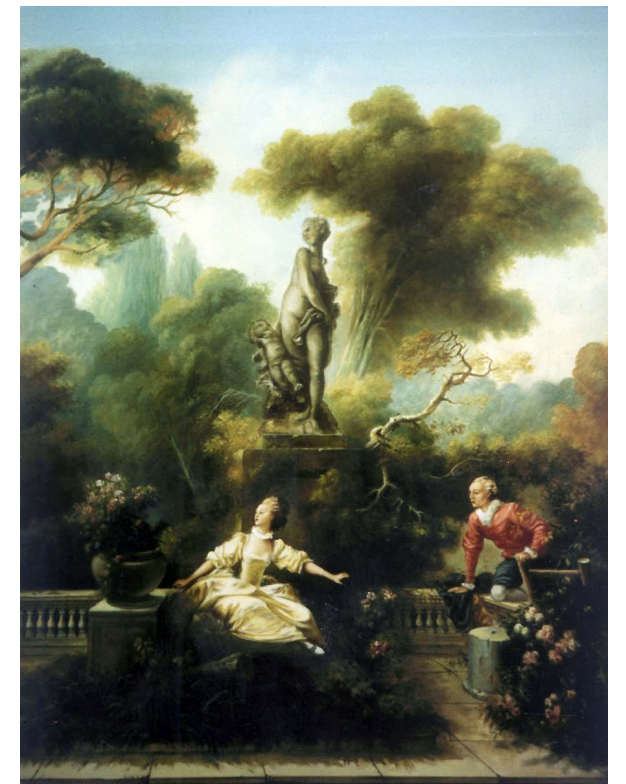
A series of murals were designed and painted for this children's playroom in a private residence in Manhattan. The murals create a panoramic scene around the room of envisioned views from the patron's other homes in Paris, Santa Barbara, East Hampton and include cameo portraits of family members. The mural's style was influenced by children's book illustration and French scenic wallpaper and specific references were used to accurately depict the various locations.



China Trade Office

The concept for this office, in a mansion on Long Island's Gold Coast, was inspired by the China Trade era and the cross cultural influences evident in its artifacts. An era that had significance for this project and its location. Design and production of the elaborate latticework and pagoda overdoors was done in collaboration with Chinese master artisan Philip Chang. Patterns were designed for fabrics and bookcases and the woodwork was painted in imitation of Chinese black lacquer. As a centerpiece an exact replica was painted of "The Whampoa Anchorage" by Youqua, 1845. A view of a Chinese port, trading with western nations by a Cantonese artist trained in Europe.

Photos: Rockwell Artisan Studio Inc.



French Rococo Mural

A panoramic mural painted in the style of French Rococo was designed and painted for this opulent Grand Dining Room in a New Jersey mansion. The composition combines scenes from the paintings of Jean Honoré Fragonard and views of the Palace de Versailles with bucolic rural vistas from Forêt de Rambouillet, to bring to life a fantasy of Louis XIV splendor.



Orientalist Bazaar Mural

Murals depicting a Middle Eastern bazaar were painted for the Grand Living Room of a royal palace in Riyadh, KSA. The murals, thirty feet tall, expand from a classic Hollywood mural centered above the fireplace. The murals were painted in New York and then installed and elaborated upon on site in Saudi Arabia. The look and imagery were inspired by and derived from the 18th century European Orientalist genreists. The style and techniques seamlessly match those employed in the original central vignette, an exotic mural by Douglas Riseborough from a Silver Screen era mansion in Beverly Hills.



"Migration" (The Expedition)

Preserve 24

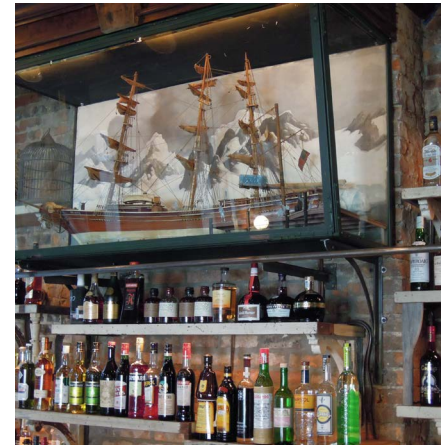
A two year project working with San Franciscan artist Brian Goggin to realize his vision of a conceptual artwork/restaurant for New York's Lower East Side. A series of paintings were created illustrating a fictional expedition to the Arctic to retrieve a block of glacial ice for preservation. Nearly every surface of this two story restaurant, including signage, furniture and the sculptures Brian Goggin designed for it, were painted, antiqued and distressed to bring this Jules Verne-like fantasy of a Steampunk Explorers' club to life.



“View of New York Harbor, ca. 1935”

Preserve 24

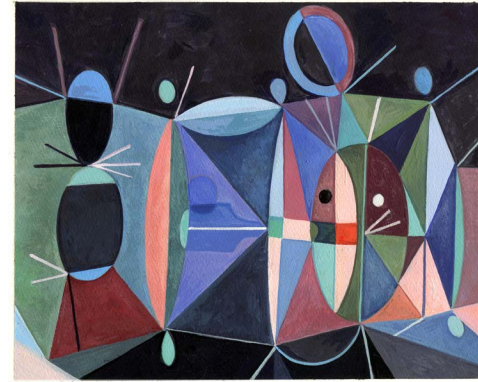
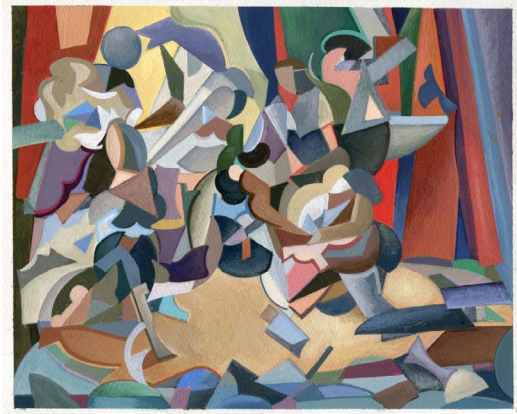
A two year project working with San Franciscan artist Brian Goggin to realize his vision of a conceptual artwork/restaurant for New York’s Lower East Side. A series of paintings were created illustrating a fictional expedition to the Arctic to retrieve a block of glacial ice for preservation. Nearly every surface of this two story restaurant, including signage, furniture and the sculptures Brian Goggin designed for it, were painted, antiqued and distressed to bring this Jules Verne-like fantasy of a Steampunk Explorers’ club to life.



"Arctic Dreamscape"

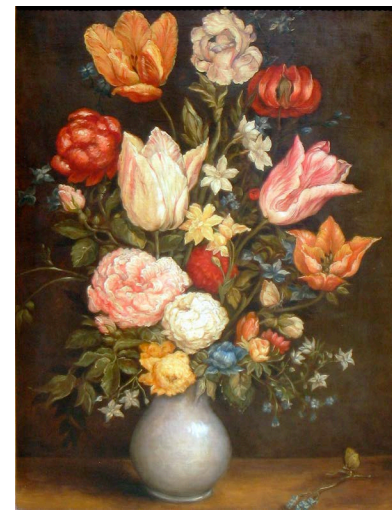
Preserve 24

A two year project working with San Franciscan artist Brian Goggin to realize his vision of a conceptual artwork/restaurant for New York's Lower East Side. A series of paintings were created illustrating a fictional expedition to the Arctic to retrieve a block of glacial ice for preservation. Nearly every surface of this two story restaurant, including signage, furniture and the sculptures Brian Goggin designed for it, were painted, antiqued and distressed to bring this Jules Verne-like fantasy of a Steampunk Explorers' club to life.



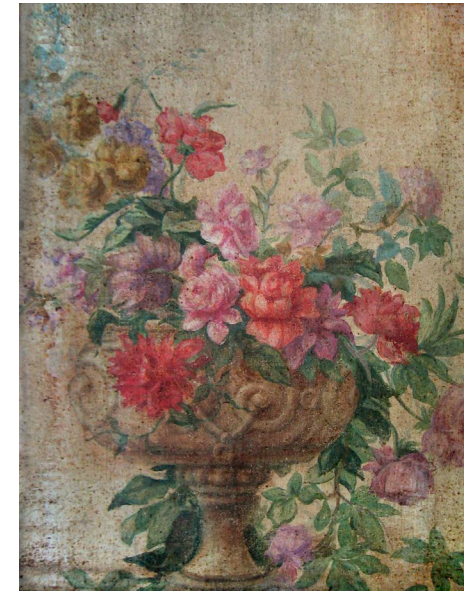
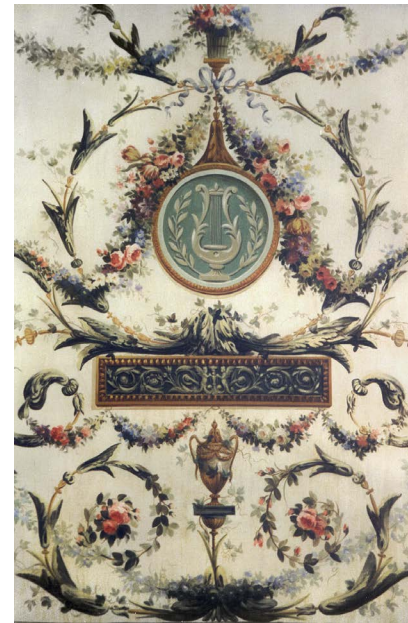
Mid-Century Style Abstract Designs

These are a selection from a series of Mid-Century style abstract designs. The designs were inspired by the work of American artists painting in the 1930's and 40's. They are intended for use in a wide range of applications, large and small, from fresco murals to framed paintings, and can be adapted to suit a variety of design situations.



Painted Reproductions

Finely rendered, highly accurate reproductions of paintings from nearly any period or style may be commissioned as well as paintings done "in the manner of". On this page are examples of copies from paintings by Henri Rousseau, John Kensett, Balthasar van der Ast, and Jan Breughel the Elder as well as an original abstract work by Rockwell Artisan Studio.



Painted Reproductions

Finely rendered, highly accurate reproductions of paintings from nearly any period or style may be commissioned as well as paintings done "in the manner of". On this page are examples of copies from paintings by Nicolas Lancret, François Boucher, Jean-Baptiste Pillement, an Arabesque panel, an antique map of the South China Sea and an antique still life.

Photos: Rockwell Artisan Studio Inc.



Some views of Rockwell Artisan Studio with various projects in progress.

ROCKWELL ARTISAN STUDIO INC.

FINE ART PROJECT COMMISSIONS

22-19 41ST AVENUE, FLOOR 6
LONG ISLAND CITY (QUEENS) NY 11101

tel: +1 646 436 1996

studio@rockwellartisanstudio.com

www.rockwellartisanstudio.com

